

ID Federation Release Notes 6.0

July 16, 2021

NTT Communications Corporation

These release notes contain information about adding ID Federation functionality.

[Release date: October 4, 2021]

1. Start offering swipe authentication expanded to PingID (pay menu)

The user's multi-factor authentication menu "Swipe Authentication" is named "PingID" and the authentication method is expanded and provided. (Fee: 100 yen/ID)

"PingID" is the name of the service that authenticates the user ID paired with the device.

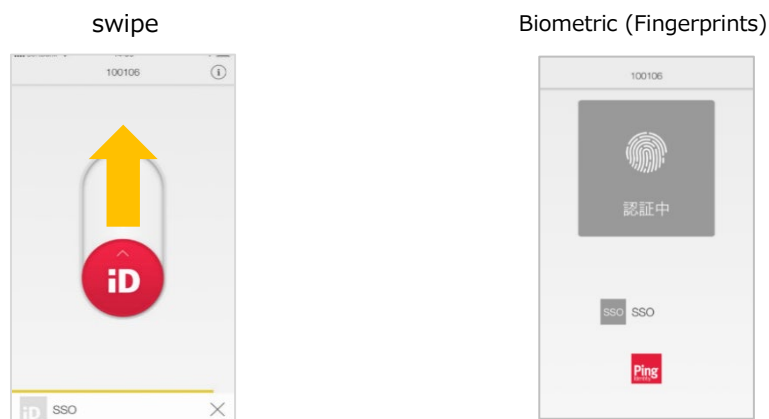
The following authentication methods are available:

- Mobile App Authentication (swipe, biometrics)
 - FIDO2 biometrics
 - Desktop OTP Authentication

You can configure a maximum of 20 device registration permissions per user.

(1) Mobile App Authentication

In the PingID Mobile App, you can swipe to authenticate by moving the slider up, or biometrics by using your fingerprint or facial device biometrics. By default, "Swipe" is enabled, and biometric authentication has priority when you apply for "Biometric authentication". Swipe authentication is applied when biometric authentication is not possible, such as when biometric information is not registered on the smartphone.

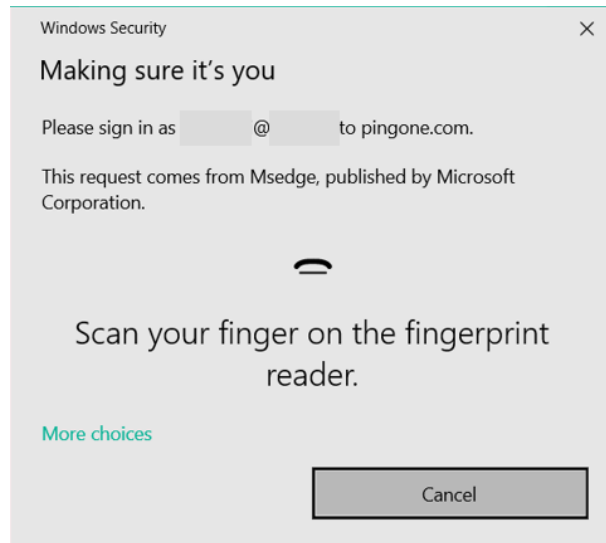


ⓘ You need to install the Ping ID app provided by Ping Identity on your smartphone.

(2) FIDO2 biometrics

Use biometrics for devices that support FIDO2 * and authenticate through a web browser. You can use the biometric authentication methods you use to start your device or unlock your screen, such as Windows Hello, TouchID/FaceID, or Android fingerprint.

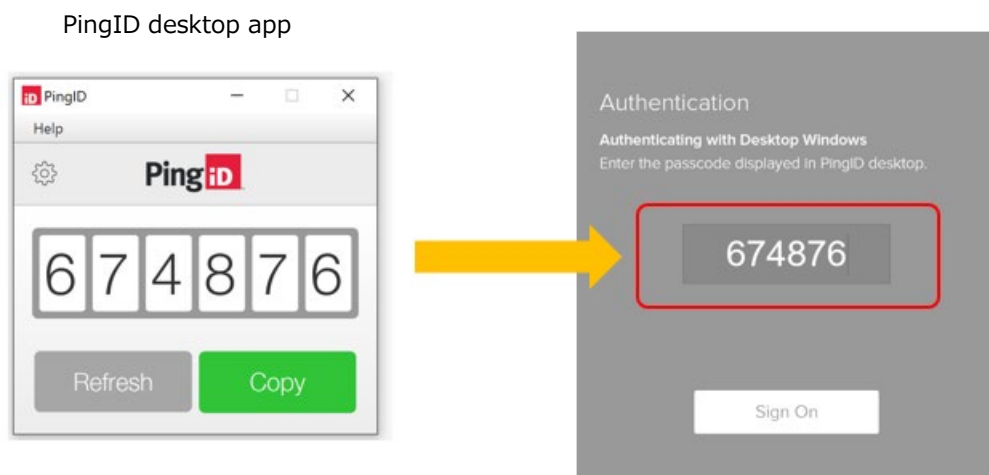
【Windows Hello】



*You need to install the Ping ID app provided by Ping Identity on your smartphone.

(3)Desktop OTP Authentication

Enter the passcode (6 digits) displayed in "PingID Desktop App" to authenticate.



① You need to install the PingID app provided by PingIdentity on your PC.

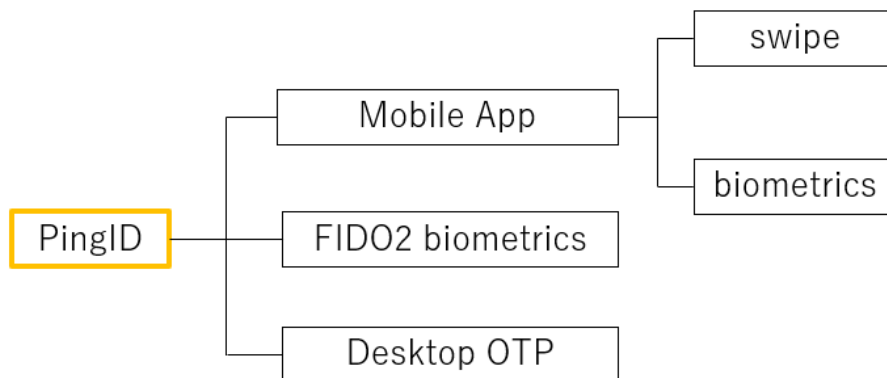
(4)The name of the swipe authentication changes to PingID.

Swipe Authentication currently available is part of PingID authentication, so change the name to PingID. Customers using "Swipe Authentication" can continue to use it as it is now.

[Current] Delivered as Swipe Authentication



[After Release] Provides multiple authentication methods named PingID



Major changes include

- **Administrator Portal – User Information Edit Screen Descriptions**

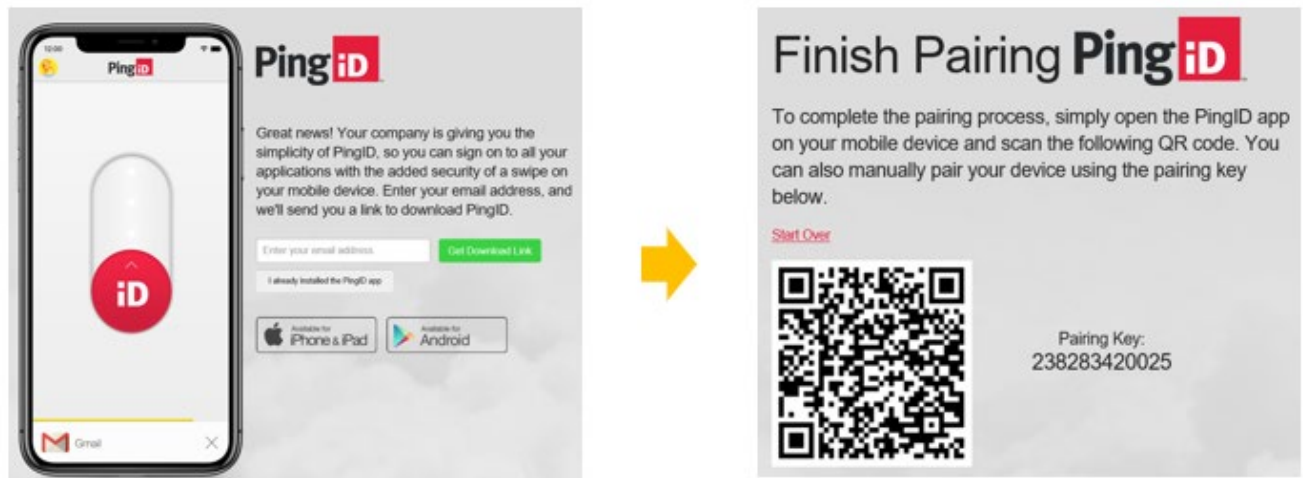
Ampere the terminal for swipe authentication ⇒ Reset PingID

- **Audit log "authentication _ type" value**

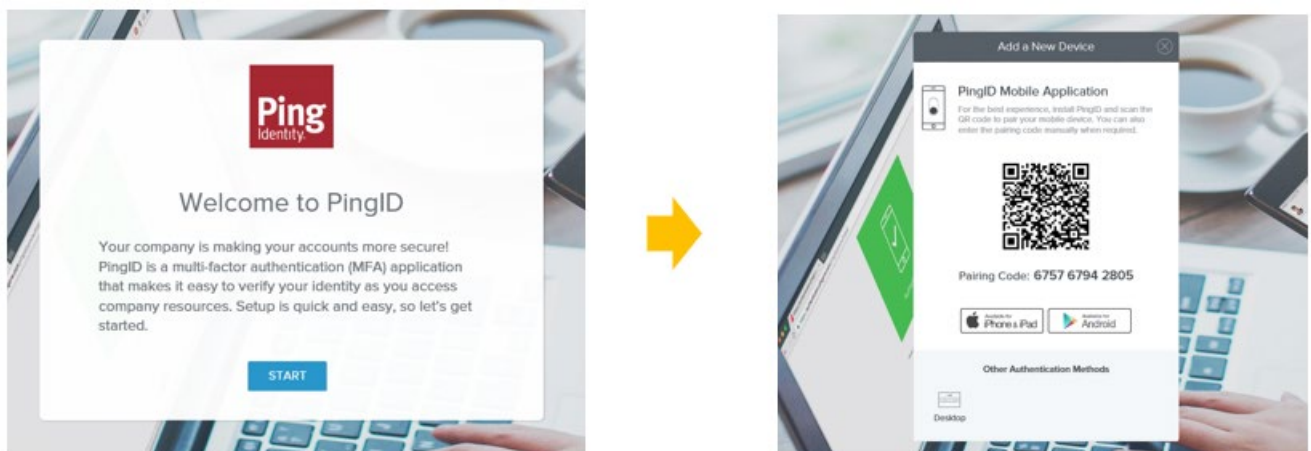
"SWIPE" ⇒ "PingID"

- pairing screen

(Current)



(After Release)



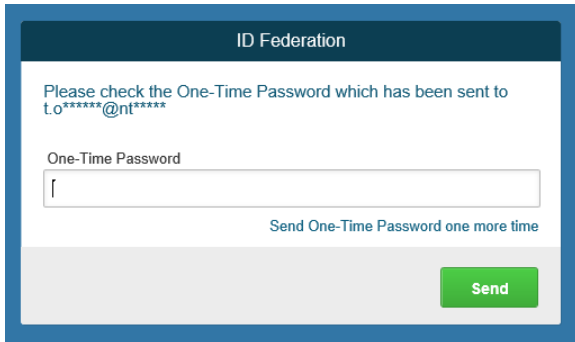
2. Administrator login is multi-factor authentication

(standard menu)

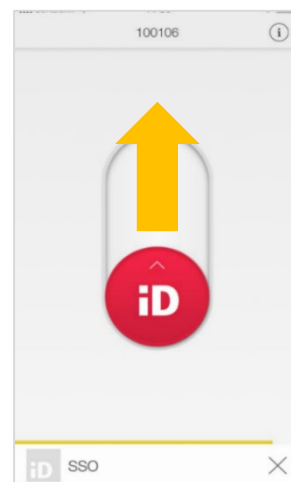
The administrator portal login changes from "Password Authentication" to "Password + Second Authentication" multi-factor authentication. You can use Mail OTP and PingID

mobile app authentication (swipe) for secondary authentication. You can set either for each enterprise administrator.

Mail OTP



swipe



❗ After December 6, 2021, logging into the Administrator Portal will require multi-factor authentication.

You must set up secondary authentication for enterprise administrators in the Admin portal between the time of release and December 5.

After December 6, corporate administrators who do not have secondary authentication configured will not be able to log in to the Administrator Portal. The message "Access from your environment is not allowed" appears.

administrator portal second authentication setting screen

administrator password *	<input type="checkbox"/> User needs to change password at next login.
Secondary authentication setting *	<div>None PingID mail OTP authentication</div> <div>"None" will disappear after December,6</div>
mail OTP contact email address *	<input type="text" value="mail OTP contact email address"/>

❗ To set PingID, you need to install the PingID app provided by PingIdentity on your

smartphone.

- ① PingID mobile app authentication (swipe) requires communication from the user device to the next FQDN.

idpxnyl3m.pingidentity.com

authenticator.pingone.com

- ① If you are an ID Federation customer and want to set the authentication method other than the mobile app authentication (swipe) of "PingID" to the second authentication, please apply for the change application form after the release.

3. Schedule

This feature will be released for maintenance between 23: 00 on Sunday, October 3, 2021 and 6: 00 on Monday, October 4 JST.

(Contact for inquiries)

<https://support.ntt.com/id-federation>

[Reception hours] 10: 00 ~ 17: 30 (Excluding Saturdays, Sundays, national holidays, and holidays designated by our company)